



HME - Heavy Metals Detection Analysis

Analyzed 25 Aug, 2022 | Instrument ICP-MS | Method TM-105

| Analyte | LOD (ppb) | LOQ (ppb) | Result ug/g | Flag | Limit ug/g |
|--------------|-----------|-----------|-------------|------|------------|
| Arsenic (As) | 0.005 | 0.015 | 0 | | |
| Cadmium (Cd) | 0.005 | 0.016 | 0 | | |
| Mercury (Hg) | 0.004 | 0.013 | 0 | | |
| Lead (Pb) | 0.075 | 0.224 | 0.01 | | |

MIB - Microbial Testing Analysis

Analyzed 29 Aug, 2022 | Instrument PCR/ Plating (not A2LA accredited) | Method TM-109

| Analyte | Limit (CFU/g) | Result CFU/g | Flag |
|--|---------------|--------------|------|
| Salmonella SPP | | NEG | |
| Total Yeast & Mold | | <10 | |
| Aspergillus fumigatus | | NEG | |
| Aspergillus flavus | | NEG | |
| Aspergillus niger | | NEG | |
| Aspergillus terreus | | NEG | |
| Shiga toxin-producing Escherichia Coli | | NEG | |

MTO - Mycotoxin Testing Analysis

Analyzed 30 Aug, 2022 | Instrument Subcontracted | Method Subcontracted

| Analyte | LOD (ppb) | LOQ (ppb) | Result ug/kg (ppb) | Flag | Limit ug/kg |
|------------------|-----------|-----------|--------------------|------|-------------|
| Mycotoxin B1 | 0.000 | 0.010 | N D | | |
| Mycotoxin B2 | 0.010 | 0.030 | N D | | |
| Mycotoxin G1 | 0.010 | 0.020 | N D | | |
| Mycotoxin G2 | 0.010 | 0.040 | N D | | |
| Ochratoxin A | 0.020 | 0.060 | N D | | |
| Total Mycotoxins | | | N D | | |

PES - Pesticides Screening Analysis

Analyzed 30 Aug, 2022 | Instrument Subcontracted | Method Subcontracted

NR Not Reportable
 ND Not Detected
 N/A Not Applicable
 NT Not Tested
 LOD Limit of Detection
 LOQ Limit of Quantification
 <LOQ Detected
 >ULOL Above upper limit of linearity
 CFU/g Colony Forming Units per 1 gram
 TNTC Too Numerous to Count



Scan the QR code to verify authenticity.

Authorized Signature

Dr. Archana R. Parameswar,
 Laboratory Director
 30 Aug, 2022 02:12:24 PM

Bluebonnet Labs Certificate of Analysis

2567 Valley View Ln, Dallas, TX 75234, United States | TX Registration #: TL2020031

DEA #: RP0607436 | ISO/IEC 17025:2017 Certificate #: 6400.01



Bluebonnet Labs

| Analytes | LOD (ppb) | LOQ (ppb) | Result ug/g | Flag | Limit ug/g |
|---------------------|-----------|-----------|-------------|------|------------|
| Abamectin | 0.110 | 0.330 | N D | | |
| Acephate | 0.230 | 0.700 | N D | | |
| Acequinocyl | 0.110 | 0.320 | N D | | |
| Acetamiprid | 0.020 | 0.050 | N D | | |
| Aldicarb | 0.020 | 0.050 | N D | | |
| Azoxystrobin | 0.020 | 0.060 | N D | | |
| Bifenazate | 0.010 | 0.030 | N D | | |
| Bifenthrin | 0.020 | 0.060 | N D | | |
| Boscalid | 0.060 | 0.170 | N D | | |
| Carbaryl | 0.010 | 0.040 | N D | | |
| Carbofuran | 0.010 | 0.020 | N D | | |
| Chlorantraniliprole | 0.010 | 0.030 | N D | | |
| Chlorpyrifos | 0.010 | 0.030 | N D | | |
| Clofentezine | 0.010 | 0.040 | N D | | |
| Coumaphos | 0.040 | 0.120 | N D | | |
| Cyfluthrin | 2.320 | 7.020 | N D | | |
| Cypermethrin | 0.370 | 1.130 | N D | | |
| Daminozide | 0.550 | 1.650 | N D | | |
| Dichlorvos | 0.050 | 0.140 | N D | | |
| Dimethoate | 0.010 | 0.020 | N D | | |
| Dimethomorph | 0.010 | 0.030 | N D | | |
| Ethoprophos | 0.020 | 0.050 | N D | | |
| Etofenprox | 0.010 | 0.040 | N D | | |
| Etoxazole | 0.010 | 0.020 | N D | | |
| Fenhexamid | 0.040 | 0.140 | N D | | |
| Fenoxycarb | 0.020 | 0.060 | N D | | |
| Fenpyroximate | 0.010 | 0.040 | N D | | |
| Fipronil | 0.010 | 0.040 | N D | | |
| Fludioxinil | 0.020 | 0.050 | N D | | |
| Flonicamide | 0.010 | 0.030 | N D | | |
| Hexythiazox | 0.010 | 0.020 | N D | | |
| Imazalil | 0.060 | 0.170 | N D | | |
| Imidacloprid | 0.040 | 0.110 | N D | | |
| Kresoxim-methyl | 0.020 | 0.050 | N D | | |
| Malathion | 0.010 | 0.030 | N D | | |
| Metalaxyl | 0.010 | 0.020 | N D | | |
| Methiocarb | 0.010 | 0.030 | N D | | |
| Methomyl | 0.020 | 0.050 | N D | | |
| Mevinphos | 0.060 | 0.180 | N D | | |
| Myclobutanil | 1.190 | 3.610 | N D | | |
| Naled | 0.030 | 0.080 | N D | | |
| Oxamyl | 0.020 | 0.050 | N D | | |
| Paclobutrazole | 0.020 | 0.060 | N D | | |
| Permethrin | 0.080 | 0.260 | N D | | |
| Phosmet | 0.010 | 0.030 | N D | | |
| Piperonyl butoxide | 0.010 | 0.040 | N D | | |
| Prallethrin | 0.100 | 0.300 | N D | | |

NR Not Reportable
 ND Not Detected
 N/A Not Applicable
 NT Not Tested
 LOD Limit of Detection
 LOQ Limit of Quantification
 <LOQ Detected
 >ULOL Above upper limit of linearity
 CFU/g Colony Forming Units per 1 gram
 TNTC Too Numerous to Count



Scan the QR code to verify authenticity.

Authorized Signature

Dr. Archana R. Parameswar,
 Laboratory Director
 30 Aug, 2022 02:12:24 PM

*This report shall not be reproduced except in full, without the written approval of the lab. This report is for informational purposes only and should not be used to diagnose, treat or prevent any disease. Results are only for samples and batches indicated. Results are reported on an "as received" basis, unless indicated otherwise.
 All required LQC (Laboratory Quality Control) samples were included in the performance of these analyses and met the acceptance criteria for ISO/IEC Regulations.

Bluebonnet Labs Certificate of Analysis

2567 Valley View Ln, Dallas, TX 75234, United States | TX Registration #: TL2020031

DEA #: RP0607436 | ISO/IEC 17025:2017 Certificate #: 6400.01



Bluebonnet Labs

| Analytes | LOD (ppb) | LOQ (ppb) | Result ug/g | Flag | Limit ug/g |
|-------------------------|-----------|-----------|-------------|------|------------|
| Propiconazole | 0.070 | 0.220 | N D | | |
| Propoxur | 0.010 | 0.030 | N D | | |
| Pyrethrin-I | 0.020 | 0.060 | N D | | |
| Pyridaben | 0.010 | 0.020 | N D | | |
| Spinetoram | 0.230 | 0.690 | N D | | |
| Spinosyn A | 0.010 | 0.020 | N D | | |
| Spinosyn D | 0.000 | 0.010 | N D | | |
| Spiromesifen | 0.050 | 0.140 | N D | | |
| Spirotetramat | 0.010 | 0.030 | N D | | |
| Spiroxamine | 0.010 | 0.030 | N D | | |
| Tebuconazole | 0.010 | 0.030 | N D | | |
| Thiachloprid | 0.010 | 0.030 | N D | | |
| Thiamethoxam | 0.010 | 0.040 | N D | | |
| Methyl parathion | 0.050 | 0.140 | N D | | |
| Diazinon | 0.010 | 0.040 | N D | | |
| Trifloxystrobin | 0.010 | 0.030 | N D | | |
| Chlordane | 0.740 | 2.250 | N D | | |
| Chlorfenapyr | 0.830 | 2.530 | N D | | |
| Pentachloronitrobenzene | 0.060 | 0.170 | N D | | |

NR Not Reportable
 ND Not Detected
 N/A Not Applicable
 NT Not Tested
 LOD Limit of Detection
 LOQ Limit of Quantification
 <LOQ Detected
 >ULOL Above upper limit of linearity
 CFU/g Colony Forming Units per 1 gram
 TNTC Too Numerous to Count



Scan the QR code to verify authenticity.

Authorized Signature

Dr. Archana R. Parameswar,
 Laboratory Director
 30 Aug, 2022 02:12:24 PM

*This report shall not be reproduced except in full, without the written approval of the lab. This report is for informational purposes only and should not be used to diagnose, treat or prevent any disease. Results are only for samples and batches indicated. Results are reported on an "as received" basis, unless indicated otherwise.
 All required LQC (Laboratory Quality Control) samples were included in the performance of these analyses and met the acceptance criteria for ISO/IEC Regulations.



RES – Residual Solvent Analysis

Analyzed 25 Aug, 2022 | Instrument HS-GC/MS | Method TM-106
 Analysis Comment: Ethylbenzene & Isobutane are not A2LA accredited.

| Analyte | LOD (ppm) | LOQ (ppm) | Result (ppm) | Flag | Limit ug/g |
|--------------------|-----------|-----------|--------------|------|------------|
| Propane | 0.470 | 1.410 | N D | | |
| Butane | 0.200 | 0.610 | N D | | |
| Methanol | 0.070 | 0.230 | N D | | |
| Pentane | 0.130 | 0.410 | N D | | |
| Ethanol | 0.130 | 0.380 | N D | | |
| Ethyl ether | 0.020 | 0.070 | N D | | |
| Acetone | 0.060 | 0.180 | N D | | |
| Isopropyl alcohol | 0.030 | 0.090 | N D | | |
| Acetonitrile | 0.020 | 0.060 | N D | | |
| Methylene chloride | 0.010 | 0.020 | N D | | |
| Hexane | 0.030 | 0.080 | N D | | |
| Ethyl acetate | 0.030 | 0.080 | N D | | |
| Chloroform | 0.010 | 0.030 | N D | | |
| Benzene | 0.010 | 0.030 | N D | | |
| 1,2-Dichloroethane | 0.010 | 0.030 | N D | | |
| Heptane | 0.020 | 0.060 | N D | | |
| Trichloroethene | 0.010 | 0.030 | N D | | |
| Toluene | 0.010 | 0.020 | N D | | |
| Isobutane | 3.900 | 11.820 | N D | | |
| Ethyl benzene | 1.700 | 5.160 | N D | | |
| m,p-Xylenes | 0.010 | 0.030 | N D | | |
| o-Xylene | 0.010 | 0.020 | N D | | |

NR Not Reportable
 ND Not Detected
 N/A Not Applicable
 NT Not Tested
 LOD Limit of Detection
 LOQ Limit of Quantification
 <LOQ Detected
 >ULOL Above upper limit of linearity
 CFU/g Colony Forming Units per 1 gram
 TNTC Too Numerous to Count



Scan the QR code to verify authenticity.

Authorized Signature

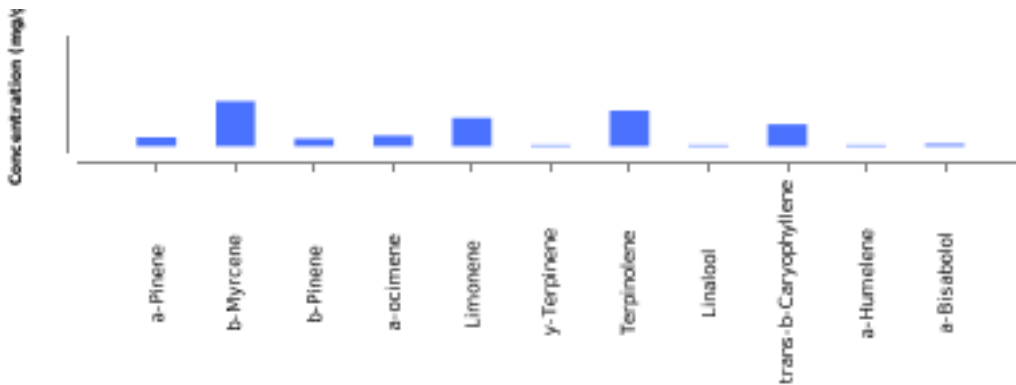
Dr. Archana R. Parameswar,
 Laboratory Director
 30 Aug, 2022 02:12:24 PM



TER- Terpenes Analysis

Analyzed 29 Aug, 2022 | Instrument HS-GC/MS | Method TM-102

| Analyte | LOD (ppm) | LOQ (ppm) | Result % | Result mg/g |
|------------------------------------|-----------|-----------|-------------|--------------|
| a-Pinene | 0.840 | 2.540 | 0.08 | 0.75 |
| Camphene | 0.940 | 2.850 | N D | N D |
| b-Myrcene | 1.080 | 3.260 | 0.37 | 3.73 |
| b-Pinene | 1.110 | 3.380 | 0.06 | 0.62 |
| 3-Carene | 0.460 | 1.400 | N D | N D |
| a-Terpinene | 1.180 | 3.570 | N D | N D |
| a-ocimene | 0.240 | 0.710 | 0.09 | 0.87 |
| Limonene | 0.730 | 2.210 | 0.23 | 2.34 |
| p-cymene | 0.680 | 2.070 | N D | N D |
| cis-b-Ocimene | 0.680 | 2.050 | N D | N D |
| Eucalyptol | 1.500 | 4.530 | N D | N D |
| γ-Terpinene | 0.570 | 1.720 | 0.01 | 0.11 |
| Terpinolene | 0.970 | 2.950 | 0.3 | 2.95 |
| Linalool | 1.830 | 5.550 | 0.01 | 0.09 |
| Isopulegol | 1.650 | 4.990 | N D | N D |
| Geraniol | 0.780 | 2.370 | N D | N D |
| trans-b-Caryophyllene | 0.910 | 2.760 | 0.18 | 1.81 |
| a-Humulene | 0.960 | 2.920 | 0.01 | 0.1 |
| cis-Nerolidol | 0.510 | 1.540 | N D | N D |
| trans-Nerolidol | 1.110 | 3.360 | N D | N D |
| Guaiol | 2.800 | 8.490 | N D | N D |
| Caryophyllene Oxide | 0.970 | 2.950 | N D | N D |
| a-Bisabolol | 2.500 | 7.560 | 0.02 | 0.18 |
| Total Terpene Concentration | | | 1.36 | 13.55 |



NR Not Reportable
 ND Not Detected
 N/A Not Applicable
 NT Not Tested
 LOD Limit of Detection
 LOQ Limit of Quantification
 <LOQ Detected
 >ULOL Above upper limit of linearity
 CFU/g Colony Forming Units per 1 gram
 TNTC Too Numerous to Count



Scan the QR code to verify authenticity.

Authorized Signature

Dr. Archana R. Parameswar,
Laboratory Director
30 Aug, 2022 02:12:24 PM